



NPR College of Engineering & Technology

NPR Nagar, Natham, Dindigul - 624401, Tamil Nadu, India.
Approved by AICTE, New Delhi & Affiliated to Anna University, Chennai.

An ISO 9001:2015 Certified Institution.

Phone No: 04544- 246 500, 246501, 246502.

Website : www.nprcolleges.org, www.nprcet.org, Email nprcetprincipal@nprcolleges.org



CRITERION 1 - CURRICULAR ASPECTS

KEY INDICATOR 1.4. FEEDBACK SYSTEM

Metric No 1.4.1: Institution obtains feedback on the syllabus and its transaction at the Institution from the following stakeholders

1) Students 2) Teachers 3) Employers 4) Alumni

S.No	Content	Page No.
1	Student Feedback on Curriculum	
	Feedback Questionnaire	03-04
	Unfilled forms	05-13
	Filled forms	14-22
	Feedback Analysis Report	23-28
2	Faculty Feedback on Curriculum	
	Feedback Questionnaire	29-30
	Unfilled forms	31-35
	Filled forms	36-40
	Feedback Analysis Report	41-45
3	Employers Feedback on Curriculum	
	Feedback Questionnaire	46-47
	Unfilled forms	48-51
	Filled forms	52-56
	Feedback Analysis Report	57-61
4	Alumni Feedback on Curriculum	
	Feedback Questionnaire	62-63
	Unfilled forms	64-69
	Filled forms	70-75
	Feedback Analysis Report	76-80
5	Action Taken Report	81-83



Dr. J.SUNDARARAJAN,

B.E., M.Tech., Ph.D.,

Principal

N.P.R. College of Engineering & Technology
Natham, Dindigul (Dt) - 624 401.



NPR COLLEGE OF ENGINEERING & TECHNOLOGY

NPR Nagar, Natham, Dindigul - 624 401. Tamilnadu.

(Approved by AICTE, New Delhi & Affiliated to Anna University, CHENNAI)
An ISO 9001 : 2015 Certified Institution

Ph : 04544 - 246500, 501, 502

Website : www.nprcet.org, www.nprcolleges.org E-mail : nprgi@nprcolleges.org



Ref. : NPRCET :

TO WHOMEVER IT MAY CONCERN

This is certify that NPR College of Engineering and Technology has adopted a Feedback System through online using Google forms for review of curriculum and takes suggestions from stakeholders like students, faculties, employers, alumni for each programme and it will improve to fine-tune the teaching learning process and the curriculum through value added courses, inculcating content beyond syllabus in theory and lab courses.




Dr. J.SUNDARARAJAN,
B.E., M.Tech., Ph.D.,
Principal
N.P.R. College of Engineering & Technology,
Natham, Dindigul (Dt) - 624 401.

 <p>NPR Research the Near</p>	<p>NPR College of Engineering & Technology NPR Nagar, Natham, Dindigul - 624401, Tamil Nadu, India. Approved by AICTE, New Delhi & Affiliated to Anna University, Chennai. An ISO 9001:2015 Certified Institution. Phone No: 04544- 246 500, 246501, 246502. Website : www.nprcolleges.org, www.nprcet.org, Email nprcetprincipal@nprcolleges.org</p>	
---	--	---

STUDENTS FEEDBACK QUESTIONNAIRE

 <p>NPR Group of Institutions Reach the Star</p>	<p align="center">NPR College of Engineering & Technology NPR Nagar, Natham, Dindigul - 624401, Tamil Nadu, India. Approved by AICTE, New Delhi & Affiliated to Anna University, Chennai. An ISO 9001:2015 Certified Institution. Phone No: 04544- 246 500, 246501, 246502. Website : www.nprcolleges.org, www.nprcet.org, Email nprcetprincipal@nprcolleges.org</p>	
--	--	---

Student Feedback on Curriculum Questionnaire

S.No	Questions
1	How do you rate the sequence of the Courses that you have studied are in sequence to what you have studied in the previous semester?
2	How do you rate the syllabus of the courses that you have studied in relation to the competencies expected out of the course?
3	How do you rate the relevance of the units in Syllabus relevant to the course?
4	How do you rate the sequence of the units in the course?
5	How do you rate the allocation of the credits to the courses?
6	How do you rate the distribution of the contact hours among the course components (L-T-P)?
7	How do you rate the offering of the electives in terms of their relevance to the specialization streams?
8	How do you rate the electives offered in relation to the Technological advancements?
9	How do you rate the relevance of the Text Books and reference books by their International recognition to the Courses?
10	Rate the Size of syllabus in terms of the load on the student
11	Rate the courses in terms of extra learning or self-learning considering the design of the courses?
12	Rate the courses in terms of sequence of offering considering whether the preceding courses have been covered?
13	How do you Rate the loading of the courses in a semester?
14	How do you rate the evaluation scheme designed for each of the course?
15	How do you rate the objectives stated for each of the course?
16	How do you rate competencies expected out of the course?
17	How do you rate the composition of the courses in terms of Basic science, Engineering science, Humanities, Discipline core, discipline elective, open elective, project etc.?
18	How do you rate the experiments in relation to the real life Applications?
19	How do you rate the domain used for designing the experiments for the LAB components?
20	How do you rate the courses having LAB components?



Dr. J.SUNDARARAJAN,
 B.E., M.Tech., Ph.D.,
 Principal
 N.P.R. College of Engineering & Technology
 Natham, Dindigul (Dt) - 624 401.



NPR College of Engineering & Technology

NPR Nagar, Natham, Dindigul - 624401, Tamil Nadu, India.

Approved by AICTE, New Delhi & Affiliated to Anna University, Chennai.

An ISO 9001:2015 Certified Institution.

Phone No: 04544- 246 500, 246501, 246502.

Website : www.nprcolleges.org, www.nprcet.org, Email: nprcetprincipal@nprcolleges.org



STUDENTS FEEDBACK UNFILLED FORMS

Student Feedback on Curriculum - NPR College of Engineering and Technology, Natham, Dindigul

Please give your valuable feedback on curriculum and syllabus to improve quality of the programme.

* Required

1. Name of the Student *

2. Year of studying *

Mark only one oval.

- First
- Second
- Third
- Final

3. Branch *

Mark only one oval.

- CSE
- ECE
- EEE
- CIVIL
- Mechanical

4. Enter your Mail ID *



5. How do you rate the sequence of the Courses that you have studied are in sequence to what you have studied in the previous semester? *

Mark only one oval.

- Excellent
- Very good
- Good
- Fair
- Poor

6. How do you rate the syllabus of the courses that you have studied in relation to the competencies expected out of the course? *

Mark only one oval.

- Excellent
- Very good
- Good
- Fair
- Poor

7. How do you rate the relevance of the units in Syllabus relevant to the course? *

Mark only one oval.

- Excellent
- Very good
- Good
- Fair
- Poor



8. How do you rate the sequence of the units in the course? *

Mark only one oval.

- Excellent
- Very good
- Good
- Fair
- Poor

9. How do you rate the allocation of the credits to the courses? *

Mark only one oval.

- Excellent
- Very good
- Good
- Fair
- Poor

10. How do you rate the distribution of the contact hours among the course components (L-T-P)? *

Mark only one oval.

- Excellent
- Very good
- Good
- Fair
- Poor



11. How do you rate the offering of the electives in terms of their relevance to the specialization streams? *

Mark only one oval.

- Excellent
 Very good
 Good
 Fair
 Poor

12. How do you rate the electives offered in relation to the Technological advancements? *

Mark only one oval.

- Excellent
 Very good
 Good
 Fair
 Poor

13. How do you rate the relevance of the Text Books and reference books by their International recognition to the Courses? *

Mark only one oval.

- Excellent
 Very good
 Good
 Fair
 Poor



14. Rate the Size of syllabus in terms of the load on the student? *

Mark only one oval.

- Excellent
- Very good
- Good
- Fair
- Poor

15. Rate the courses in terms of extra learning or self learning considering the design of the courses? *

Mark only one oval.

- Excellent
- Very good
- Good
- Fair
- Poor

16. Rate the courses in terms of sequence of offering considering whether the preceding courses have been covered? *

Mark only one oval.

- Excellent
- Very good
- Good
- Fair
- Poor



17. How do you Rate the loading of the courses in a semester? *

Mark only one oval.

- Excellent
- Very good
- Good
- Fair
- Poor

18. How do you rate the evaluation scheme designed for each of the course? *

Mark only one oval.

- Excellent
- Very good
- Good
- Fair
- Poor

19. How do you rate the objectives stated for each of the course? *

Mark only one oval.

- Excellent
- Very good
- Good
- Fair
- Poor



20. How do you rate competencies expected out of the course? *

Mark only one oval.

- Excellent
- Very good
- Good
- Fair
- Poor

21. How do you rate the composition of the courses in terms of Basic science, Engineering science, Humanities, Discipline core, discipline elective, open elective, project etc.? *

Mark only one oval.

- Excellent
- Very good
- Good
- Fair
- Poor

22. How do you rate the experiments in relation to the real life Applications? *

Mark only one oval.

- Excellent
- Very good
- Good
- Fair
- Poor



23. How do you rate the domain used for designing the experiments for the LAB * components?

Mark only one oval.

Excellent

Very good

Good

Fair

Poor

24. How do you rate the courses having LAB components? *

Mark only one oval.

Excellent

Very good

Good

Fair

Poor

This content is neither created nor endorsed by Google.

Google Forms



A handwritten signature in blue ink, consisting of a large, stylized 'J' followed by 'SUNDARARAJAN'.

Dr. J.SUNDARARAJAN,
B.E., M.Tech., Ph.D.,
Principal
N.P.R. College of Engineering & Technology
Natham, Dindigul (Dt) - 624 401.



NPR College of Engineering & Technology

NPR Nagar, Natham, Dindigul - 624401, Tamil Nadu, India.

Approved by AICTE, New Delhi & Affiliated to Anna University, Chennai.

An ISO 9001:2015 Certified Institution.

Phone No: 04544- 246 500, 246501, 246502.

Website : www.nprcolleges.org, www.nprcet.org, Email nprcetprincipal@nprcolleges.org



STUDENTS FEEDBACK FILLED FORMS

Student Feedback on Curriculum - NPR College of Engineering and Technology, Natham, Dindigul

Please give your valuable feedback on curriculum and syllabus to improve quality of the programme.

Name of the Student *

ANAND KUMAR S

Year of studying *

- First
- Second
- Third
- Final

Branch *

- CSE
- ECE
- EEE
- CIVIL
- Mechanical



Enter your Mail ID *

anandkumarcse7@gmail.com

How do you rate the sequence of the Courses that you have studied are in sequence to what you have studied in the previous semester? *

- Excellent
- Very good
- Good
- Fair
- Poor

How do you rate the syllabus of the courses that you have studied in relation to the competencies expected out of the course? *

- Excellent
- Very good
- Good
- Fair
- Poor



How do you rate the relevance of the units in Syllabus relevant to the course? *

- Excellent
- Very good
- Good
- Fair
- Poor

How do you rate the sequence of the units in the course? *

- Excellent
- Very good
- Good
- Fair
- Poor

How do you rate the allocation of the credits to the courses? *

- Excellent
- Very good
- Good
- Fair
- Poor



How do you rate the distribution of the contact hours among the course components (L-T-P)? *

- Excellent
- Very good
- Good
- Fair
- Poor

How do you rate the offering of the electives in terms of their relevance to the specialization streams? *

- Excellent
- Very good
- Good
- Fair
- Poor

How do you rate the electives offered in relation to the Technological advancements? *

- Excellent
- Very good
- Good
- Fair
- Poor



How do you rate the relevance of the Text Books and reference books by their International recognition to the Courses? *

- Excellent
- Very good
- Good
- Fair
- Poor

Rate the Size of syllabus in terms of the load on the student? *

- Excellent
- Very good
- Good
- Fair
- Poor

Rate the courses in terms of extra learning or self learning considering the design of the courses? *

- Excellent
- Very good
- Good
- Fair
- Poor



Rate the courses in terms of sequence of offering considering whether the preceding courses have been covered? *

- Excellent
- Very good
- Good
- Fair
- Poor

How do you Rate the loading of the courses in a semester? *

- Excellent
- Very good
- Good
- Fair
- Poor

How do you rate the evaluation scheme designed for each of the course? *

- Excellent
- Very good
- Good
- Fair
- Poor



How do you rate the objectives stated for each of the course? *

- Excellent
- Very good
- Good
- Fair
- Poor

How do you rate competencies expected out of the course? *

- Excellent
- Very good
- Good
- Fair
- Poor

How do you rate the composition of the courses in terms of Basic science, Engineering science, Humanities, Discipline core, discipline elective, open elective, project etc.? *

- Excellent
- Very good
- Good
- Fair
- Poor



How do you rate the experiments in relation to the real life Applications? *

- Excellent
- Very good
- Good
- Fair
- Poor

How do you rate the domain used for designing the experiments for the LAB components? *

- Excellent
- Very good
- Good
- Fair
- Poor

How do you rate the courses having LAB components? *

- Excellent
- Very good
- Good
- Fair
- Poor




Dr. J.SUNDARARAJAN,
B.E., M.Tech., Ph.D.,
Principal
N.P.R. College of Engineering & Technology
Natham, Dindigul (Dt) - 624 401.

 <p>NPR Reach the Star</p>	<p>NPR College of Engineering & Technology NPR Nagar, Natham, Dindigul - 624401, Tamil Nadu, India. Approved by AICTE, New Delhi & Affiliated to Anna University, Chennai. An ISO 9001:2015 Certified Institution. Phone No: 04544- 246 500, 246501, 246502. Website : www.nprcolleges.org, www.nprcet.org, Email: nprcetprincipal@nprcolleges.org</p>	 <p>ISO 9001</p>
--	---	--

STUDENTS FEEDBACK ANALYSIS REPORT

	<h1 style="text-align: center;">NPR College of Engineering & Technology</h1> <p style="text-align: center;">NPR Nagar, Natham, Dindigul - 624401, Tamil Nadu, India. Approved by AICTE, New Delhi & Affiliated to Anna University, Chennai. An ISO 9001:2015 Certified Institution. Phone No: 04544- 246 500, 246501, 246502. Website : www.nprcolleges.org, www.nprcet.org, Email nprcetprincipal@nprcolleges.org</p>	
--	--	---

Student Feedback on Curriculum Info – Feedback Analysis Report

Academic Year: 2020-2021

Report Date:20/01/2021

From:18/12/2020 To:18/01/2021

S.No	Question's	Excellent	Very Good	Good	Fair	Poor	Total Weightage	Percentage	3-Scale Weightage
1	How do you rate the sequence of the Courses that you have studied are in sequence to what you have studied in the previous semester?	316	141	98	18	9	2483	85.33%	2.56
2	How do you rate the syllabus of the courses that you have studied in relation to the competencies expected out of the course?	244	192	111	27	8	2383	81.89%	2.46
3	How do you rate the relevance of the units in Syllabus relevant to the course?	201	218	128	26	9	2322	79.79%	2.39
4	How do you rate the sequence of the units in the course?	182	241	113	38	8	2297	78.93%	2.37
5	How do you rate the allocation of the credits to the courses?	191	213	133	34	11	2285	78.52%	2.36
6	How do you rate the distribution of the contact hours among the course components (L-T-P)?	202	216	117	35	12	2307	79.28%	2.38
7	How do you rate the offering of the electives in terms of their relevance to the specialization	209	198	139	25	11	2315	79.55%	2.39





NPR College of Engineering & Technology

NPR Nagar, Natham, Dindigul - 624401, Tamil Nadu, India.
Approved by AICTE, New Delhi & Affiliated to Anna University, Chennai.
An ISO 9001:2015 Certified Institution.

Phone No: 04544- 246 500, 246501, 246502.

Website : www.nprcolleges.org, www.nprcet.org, Email: nprcetprincipal@nprcolleges.org



	streams?								
8	How do you rate the electives offered in relation to the Technological advancements?	172	205	157	36	12	2235	76.80%	2.30
9	How do you rate the relevance of the Text Books and reference books by their International recognition to the Courses?	151	248	144	29	10	2247	77.22%	2.32
10	Rate the Size of syllabus in terms of the load on the student	185	196	163	27	11	2263	77.77%	2.33
11	Rate the courses in terms of extra learning or self learning considering the design of the courses	152	214	132	73	11	2169	74.54%	2.24
12	Rate the courses in terms of sequence of offering considering whether the preceding courses have been covered	203	190	148	30	11	2290	78.69%	2.36
13	How do you Rate the loading of the courses in a semester?	183	218	142	28	11	2280	78.35%	2.35
14	How do you rate the evaluation scheme designed for each of the course?	192	218	137	24	11	2302	79.11%	2.37





NPR College of Engineering & Technology

NPR Nagar, Natham, Dindigul - 624401, Tamil Nadu, India.
Approved by AICTE, New Delhi & Affiliated to Anna University, Chennai.
An ISO 9001:2015 Certified Institution.
Phone No: 04544- 246 500, 246501, 246502.
Website : www.nprcolleges.org, www.nprcet.org, Email: nprcetprincipal@nprcolleges.org



15	How do you rate the objectives stated for each of the course?	190	199	153	29	11	2274	78.14%	2.34
16	How do you rate competencies expected out of the course?	175	212	143	41	11	2245	77.15%	2.31
17	How do you rate the composition of the courses in terms of Basic science, Engineering science, Humanities, Discipline core, discipline elective, open elective, project etc.?	192	205	130	43	12	2268	77.94%	2.34
18	How do you rate the experiments in relation to the real life Applications?	191	175	105	87	24	2168	74.50%	2.24
19	How do you rate the domain used for designing the experiments for the LAB components?	182	190	98	87	25	2163	74.33%	2.23
20	How do you rate the courses having LAB components?	239	161	67	89	26	2244	77.11%	2.31
AVERAGE SCORE							2277	78.25%	2.35



Dr. J.SUNDARARAJAN,
B.E., M.Tech., Ph.D.,
Principal
N.P.R. College of Engineering & Technology
Natham, Dindigul (Dt) - 624 401.

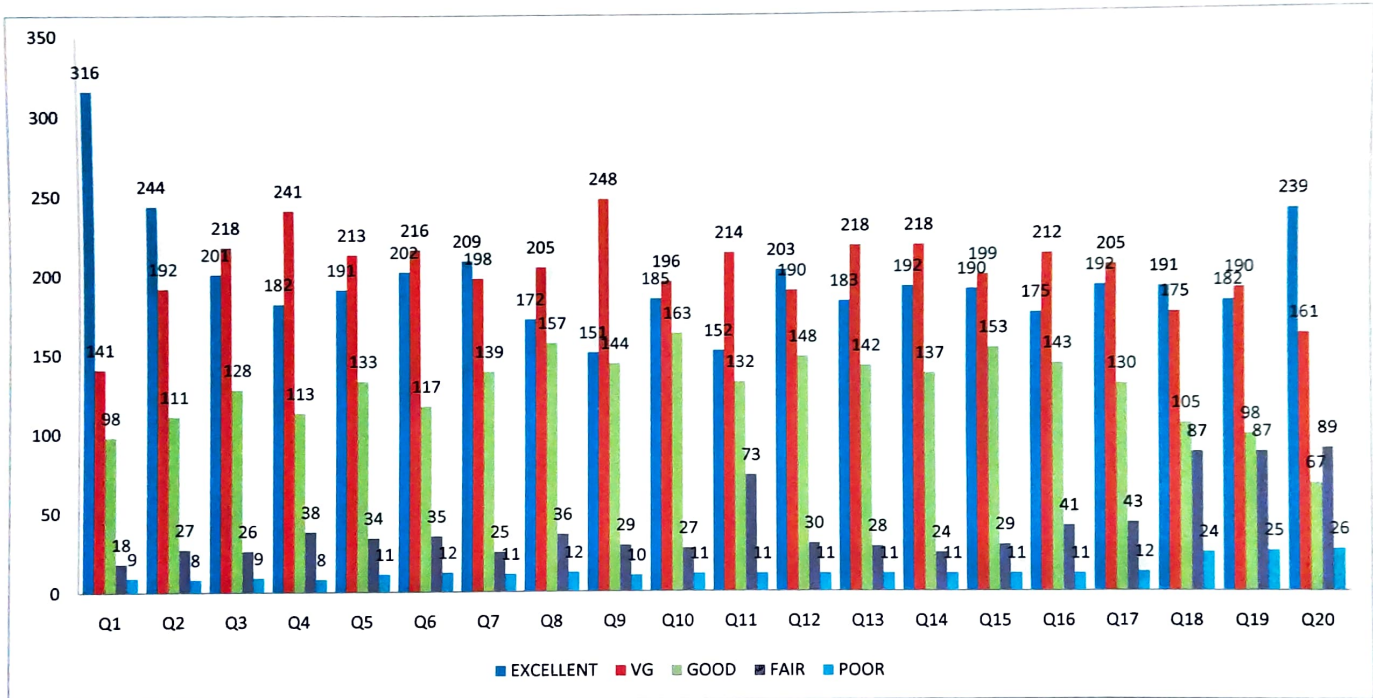


NPR College of Engineering & Technology

NPR Nagar, Natham, Dindigul - 624401, Tamil Nadu, India.
 Approved by AICTE, New Delhi & Affiliated to Anna University, Chennai.
 An ISO 9001:2015 Certified Institution.
 Phone No: 04544- 246 500, 246501, 246502.



Website : www.nprcolleges.org, www.nprcet.org, Email nprcetprincipal@nprcolleges.org



Student Feedback – From 18/12/2020 To 18/01/2021





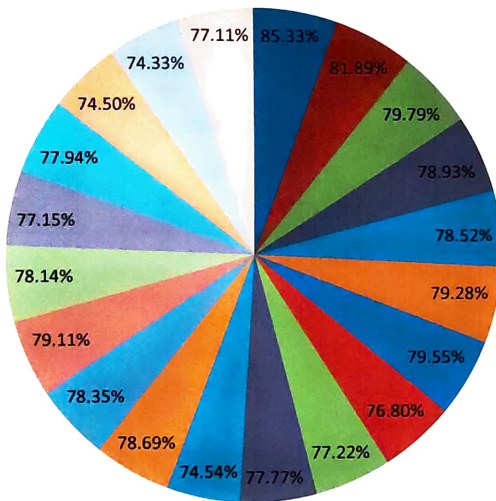
NPR College of Engineering & Technology

NPR Nagar, Natham, Dindigul - 624401, Tamil Nadu, India.
Approved by AICTE, New Delhi & Affiliated to Anna University, Chennai.
An ISO 9001:2015 Certified Institution.
Phone No: 04544- 246 500, 246501, 246502.

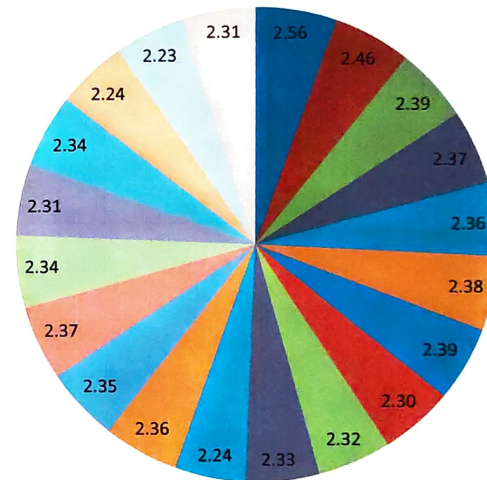
Website : www.nprcolleges.org, www.nprcet.org, Email nprcetprincipal@nprcolleges.org



Percentage



3-Scale Index



Student Feedback – From 18/12/2020 To 18/01/2021



	<p>NPR College of Engineering & Technology NPR Nagar, Natham, Dindigul - 624401, Tamil Nadu, India. Approved by AICTE, New Delhi & Affiliated to Anna University, Chennai. An ISO 9001:2015 Certified Institution. Phone No: 04544- 246 500, 246501, 246502. Website : www.nprcolleges.org, www.nprcet.org, Email nprcetprincipal@nprcolleges.org</p>	
---	--	---

FACULTY FEEDBACK QUESTIONNAIRE

	<p style="text-align: center;">NPR College of Engineering & Technology NPR Nagar, Natham, Dindigul - 624401, Tamil Nadu, India. Approved by AICTE, New Delhi & Affiliated to Anna University, Chennai. An ISO 9001:2015 Certified Institution. Phone No: 04544- 246 500, 246501, 246502. Website : www.nprcolleges.org, www.nprcet.org, Email nprcetprincipal@nprcolleges.org</p>	
---	---	---

Faculty Feedback on Curriculum Questionnaire

S.No	Questions
1	The Learning Objectives are clear and appropriate to the program
2	The curriculum and Syllabus are well organized and suitable to the program.
3	The text books/ reference books are well suited to the courses.
4	The system followed by the university for the design and development of curriculum is ineffective
5	Provision to update curriculum time to time.
6	How do you rate the distribution of contact hours among the course components?
7	The curriculum has a good balance between theory and practical.
8	How do rate the electives offered in your program for the technological advancements?




Dr. J.SUNDARARAJAN,
 B.E., M.Tech., Ph.D.,
 Principal
 N.P.R. College of Engineering & Technology
 Natham, Dindigul (Dt) - 624 401.



NPR College of Engineering & Technology

NPR Nagar, Natham, Dindigul - 624401, Tamil Nadu, India.

Approved by AICTE, New Delhi & Affiliated to Anna University, Chennai.

An ISO 9001:2015 Certified Institution.

Phone No: 04544- 246 500, 246501, 246502.

Website : www.nprcolleges.org, www.nprcet.org, Email nprcetprincipal@nprcolleges.org



FACULTY FEEDBACK UNFILLED FORMS

Faculty Feedback on Curriculum - NPR College of Engineering and Technology, Natham, Dindigul

Please give your valuable feedback on curriculum and syllabus to improve quality of the programme.

* Required

1. Name of the Faculty *

2. Designation *

3. Department *

Mark only one oval.

CSE

ECE

EEE

CIVIL

Mechanical

S & H

4. Enter your Mail ID *



5. The Learning Objectives are clear and appropriate to the program *

Mark only one oval.

- Excellent
- Very good
- Good
- Fair
- Poor

6. The curriculum and Syllabus are well organized and suitable to the program *

Mark only one oval.

- Excellent
- Very good
- Good
- Fair
- Poor

7. The text books/ reference books are well suited to the courses. *

Mark only one oval.

- Excellent
- Very good
- Good
- Fair
- Poor



8. The system followed by the university for the design and development of curriculum is effective *

Mark only one oval.

- Excellent
 Very good
 Good
 Fair
 Poor

9. Provision to update curriculum time to time. *

Mark only one oval.

- Excellent
 Very good
 Good
 Fair
 Poor

10. How do you rate the distribution of contact hours among the course components? *

Mark only one oval.

- Excellent
 Very good
 Good
 Fair
 Poor



11. The curriculum has a good balance between theory and practical. *

Mark only one oval.

Excellent

Very good

Good

Fair

Poor

12. How do rate the electives offered In your program for the technological advancements? *

Mark only one oval.

Excellent

Very good

Good

Fair

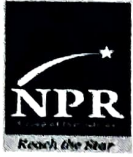
Poor

This content is neither created nor endorsed by Google.

Google Forms




Dr. J.SUNDARARAJAN,
B.E., M.Tech., Ph.D.,
Principal
N.P.R. College of Engineering & Technology
Natham, Dindigul (Dt) - 624 401.



NPR College of Engineering & Technology

NPR Nagar, Natham, Dindigul - 624401, Tamil Nadu, India
Approved by AICTE, New Delhi & Affiliated to Anna University, Chennai.

An ISO 9001:2015 Certified Institution.

Phone No: 04544- 246 500, 246501, 246502.

Website : www.nprcolleges.org, www.nprcet.org, Email nprcetprincipal@nprcolleges.org



FACULTY FEEDBACK FILLED FORMS

Faculty Feedback on Curriculum - NPR College of Engineering and Technology, Natham, Dindigul

Please give your valuable feedback on curriculum and syllabus to improve quality of the programme.

Name of the Faculty *

Mr. J. G. Sabarish

Designation *

Assistant Professor

Department *

- CSE
- ECE
- EEE
- CIVIL
- Mechanical
- S & H

Enter your Mail ID *

sabarish@nprcolleges.org



The Learning Objectives are clear and appropriate to the program *

- Excellent
- Very good
- Good
- Fair
- Poor

The curriculum and Syllabus are well organized and suitable to the program *

- Excellent
- Very good
- Good
- Fair
- Poor

The text books/ reference books are well suited to the courses. *

- Excellent
- Very good
- Good
- Fair
- Poor



The system followed by the university for the design and development of curriculum is effective *

- Excellent
- Very good
- Good
- Fair
- Poor

Provision to update curriculum time to time. *

- Excellent
- Very good
- Good
- Fair
- Poor

How do you rate the distribution of contact hours among the course components? *

- Excellent
- Very good
- Good
- Fair
- Poor



The curriculum has a good balance between theory and practical. *

- Excellent
- Very good
- Good
- Fair
- Poor

How do rate the electives offered in your program for the technological advancements? *

- Excellent
- Very good
- Good
- Fair
- Poor

This content is neither created nor endorsed by Google.

Google Forms




Dr. J.SUNDARARAJAN,
B.E., M.Tech., Ph.D.,
Principal
N.P.R. College of Engineering & Technology
Natham, Dindigul (Dt) - 624 401.

	<p>NPR College of Engineering & Technology NPR Nagar, Natham, Dindigul - 624401, Tamil Nadu, India. Approved by AICTE, New Delhi & Affiliated to Anna University, Chennai. An ISO 9001:2015 Certified Institution. Phone No: 04544- 246 500, 246501, 246502. Website : www.nprcolleges.org, www.nprcet.org, Email nprcetprincipal@nprcolleges.org</p>	
---	--	---

FACULTY FEEDBACK ANALYSIS REPORT

	<h1>NPR College of Engineering & Technology</h1> <p>NPR Nagar, Natham, Dindigul - 624401, Tamil Nadu, India. Approved by AICTE, New Delhi & Affiliated to Anna University, Chennai. An ISO 9001:2015 Certified Institution. Phone No: 04544- 246 500, 246501, 246502. Website : www.nprcolleges.org, www.nprcet.org, Email: nprcetprincipal@nprcolleges.org</p>	
---	---	---

Faculty Feedback on Curriculum Info – Feedback Analysis Report

Academic Year: 2020-2021 Report Date:22/01/2021 From:18/01/2021 To:21/01/2021

S.No	Question's	Excellent	Very Good	Good	Fair	Poor	Total Weightage	Percentage	3-Scale Weightage
1	The Learning Objectives are clear and appropriate to the program	43	30	4	0	0	347	90.13%	2.70
2	The curriculum and Syllabus are well organized and suitable to the program.	31	39	7	0	0	332	86.23%	2.59
3	The text books/ reference books are well suited to the courses.	38	28	11	0	0	335	87.01%	2.61
4	The system followed by the university for the design and development of curriculum is effective	23	27	26	1	0	303	78.70%	2.36
5	Provision to update curriculum time to time.	25	27	21	4	0	304	78.96%	2.37
6	How do you rate the distribution of contact hours among the course components?	30	34	12	1	0	324	84.16%	2.52
7	The curriculum has a good balance between theory and practical.	25	27	24	1	0	307	79.74%	2.39





NPR College of Engineering & Technology

NPR Nagar, Natham, Dindigul - 624401, Tamil Nadu, India.
Approved by AICTE, New Delhi & Affiliated to Anna University, Chennai.

An ISO 9001:2015 Certified Institution.


Phone No: 04544- 246 500, 246501, 246502.

Website : www.nprcolleges.org, www.nprcet.org, Email:nprcetprincipal@nprcolleges.org



8	How do rate the electives offered in your program for the technological advancements?	25	25	27	0	0	306	79.48%	2.38
AVERAGE SCORE							319.75	83.05%	2.49

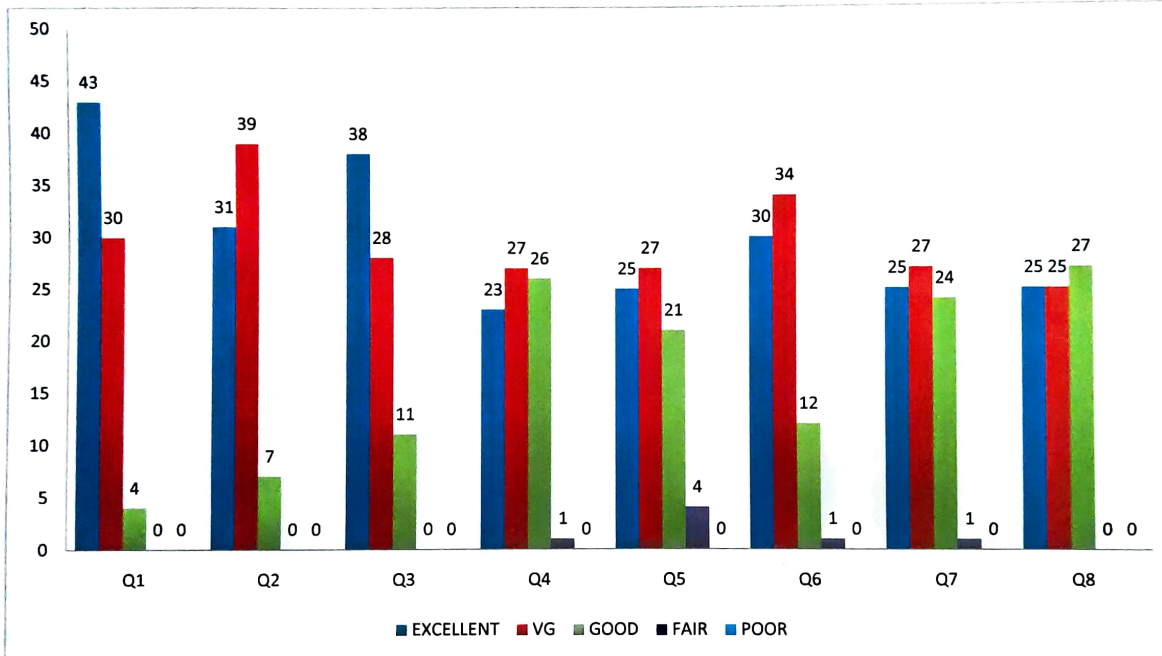



Dr. J.SUNDARARAJAN,
B.E., M.Tech., Ph.D.,
Principal
N.P.R. College of Engineering & Technology
Natham, Dindigul (Dt) - 624 401.



NPR College of Engineering & Technology

NPR Nagar, Natham, Dindigul - 624401, Tamil Nadu, India.
Approved by AICTE, New Delhi & Affiliated to Anna University, Chennai.
An ISO 9001:2015 Certified Institution.
Phone No: 04544- 246 500, 246501, 246502.
Website : www.nprcolleges.org, www.nprcet.org, Email nprcetprincipal@nprcolleges.org



Faculty Feedback – From 18/01/2021 To 21/01/2021





NPR College of Engineering & Technology

NPR Nagar, Natham, Dindigul - 624401, Tamil Nadu, India
Approved by AICTE, New Delhi & Affiliated to Anna University, Chennai.

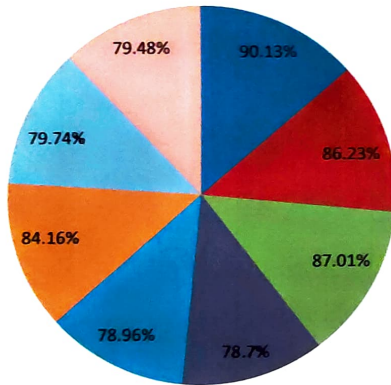
An ISO 9001:2015 Certified Institution.

Phone No: 04544- 246 500, 246501, 246502.

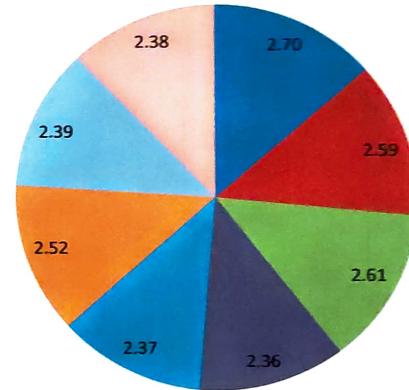
Website : www.nprcolleges.org, www.nprcet.org, Email nprcetprincipal@nprcolleges.org



Percentage



3-Scale Index



Faculty Feedback – From 18/01/2021 To 21/01/2021



	<p>NPR College of Engineering & Technology NPR Nagar, Natham, Dindigul - 624401, Tamil Nadu, India Approved by AICTE, New Delhi & Affiliated to Anna University, Chennai. An ISO 9001:2015 Certified Institution. Phone No: 04544- 246 500, 246501, 246502. Website : www.nprcolleges.org, www.nprcet.org, Email nprcetprincipal@nprcolleges.org</p>	
---	---	---

EMPLOYERS FEEDBACK QUESTIONNAIRE



NPR College of Engineering & Technology

NPR Nagar, Natham, Dindigul - 624401, Tamil Nadu, India.
Approved by AICTE, New Delhi & Affiliated to Anna University, Chennai.

An ISO 9001:2015 Certified Institution.

Phone No: 04544- 246 500, 246501, 246502.

Website : www.nprcolleges.org, www.nprcet.org, Email: nprcetprincipal@nprcolleges.org



Employers Feedback on Curriculum Questionnaire

S.No	Questions
1	How do you rate the syllabus relevant to the real life situations?
2	How do you rate the learning values (skills, concepts, knowledge & analytical abilities) present in the syllabus?
3	How do you rate the relevance for implementation in projects?
4	How do you rate the gap filling ability of the available syllabus to bridge academics and industry?
5	How do you rate the design of the curriculum on developing the employability?
6	How do you rate the design of curriculum on nurturing the entrepreneurship?
7	How do you rate the syllabus updation regarding advanced topics?
8	How do you rate the available teaching tools to enhance the understanding of subjects?



Dr. J. SUNDARARAJAN,
B.E., M.Tech., Ph.D.,
Principal
N.P.R. College of Engineering & Technology,
Natham, Dindigul (Dt) - 624 401.



NPR College of Engineering & Technology

NPR Nagar, Natham, Dindigul - 624401, Tamil Nadu, India.

Approved by AICTE, New Delhi & Affiliated to Anna University, Chennai.

An ISO 9001:2015 Certified Institution.

Phone No: 04544- 246 500, 246501, 246502.

Website : www.nprcolleges.org, www.nprcet.org, Email nprcetprincipal@nprcolleges.org



EMPLOYERS FEEDBACK UNFILLED FORMS

Employer Feedback on curriculum - NPR College of Engineering and Technology, Natham, Dindigul

Please give your valuable feedback on curriculum and syllabus to improve quality of the programme.

* Required

1. Name of the Employer

2. Mail ID *

3. How do you rate the syllabus relevant to the real life situations? *

Mark only one oval.

Excellent

Very good

Good

Fair

Poor

4. How do you rate the learning values (skills, concepts, knowledge & analytical abilities) present in the syllabus? *

Mark only one oval.

Excellent

Very good

Good

Fair

Poor



5. How do you rate the relevance for implementation in projects? *

Mark only one oval.

- Excellent
- Very good
- Good
- Fair
- Poor

6. How do you rate the gap filling ability of the available syllabus to bridge academics and Industry? *

Mark only one oval.

- Excellent
- Very good
- Good
- Fair
- Poor

7. How do you rate the design of the curriculum on developing the employability? *

Mark only one oval.

- Excellent
- Very good
- Good
- Fair
- Poor



8. How do you rate the design of curriculum on nurturing the entrepreneurship? *

Mark only one oval.

- Excellent
- Very good
- Good
- Fair
- Poor

9. How do you rate the syllabus updation regarding advanced topics? *

Mark only one oval.

- Excellent
- Very good
- Good
- Fair
- Poor

10. How do you rate the available teaching tools to enhance the understanding *
of subjects?

Mark only one oval.

- Excellent
- Very good
- Good
- Fair
- Poor



Dr. J.SUNDARARAJAN,
B.E., M.Tech., Ph.D.
Principal

N.P.R. College of Engineering & Technology
Matham, Dindigul (Dt) - 624 401.

This content is neither created nor endorsed by Google.

	<p>NPR College of Engineering & Technology NPR Nagar, Natham, Dindigul - 624401, Tamil Nadu, India. Approved by AICTE, New Delhу & Affiliated to Anna University, Chennai. An ISO 9001:2015 Certified Institution. Phone No: 04544- 246 500, 246501, 246502. Website : www.nprcolleges.org, www.nprcet.org, Email nprcetprincipal@nprcolleges.org</p>	
---	--	---

EMPLOYERS FEEDBACK

FILLED FORMS

Employer Feedback on curriculum - NPR College of Engineering and Technology, Natham, Dindigul

Please give your valuable feedback on curriculum and syllabus to improve quality of the programme.

Name of the Employer

VEI Technologies

Mail ID *

info@veitechnologies.com

How do you rate the syllabus relevant to the real life situations? *

- Excellent
- Very good
- Good
- Fair
- Poor



How do you rate the learning values (skills, concepts, knowledge & analytical abilities) present in the syllabus? *

- Excellent
- Very good
- Good
- Fair
- Poor

How do you rate the relevance for implementation in projects? *

- Excellent
- Very good
- Good
- Fair
- Poor

How do you rate the gap filling ability of the available syllabus to bridge academics and Industry? *

- Excellent
- Very good
- Good
- Fair
- Poor



How do you rate the design of the curriculum on developing the employability? *

- Excellent
- Very good
- Good
- Fair
- Poor

How do you rate the design of curriculum on nurturing the entrepreneurship? *

- Excellent
- Very good
- Good
- Fair
- Poor

How do you rate the syllabus updation regarding advanced topics? *

- Excellent
- Very good
- Good
- Fair
- Poor



How do you rate the available teaching tools to enhance the understanding of subjects? *

- Excellent
- Very good
- Good
- Fair
- Poor

This content is neither created nor endorsed by Google.

Google Forms




Dr. J.SUNDARARAJAN,
B.E., M.Tech., Ph.D.,
Principal
N.P.R. College of Engineering & Technology
Natham, Dindigul (Dt) - 624 401.

	<p>NPR College of Engineering & Technology NPR Nagar, Natham, Dindigul - 624401, Tamil Nadu, India. Approved by AICTE, New Delhi & Affiliated to Anna University, Chennai. An ISO 9001:2015 Certified Institution. Phone No: 04544- 246 500, 246501, 246502. Website : www.nprcolleges.org, www.nprcet.org, Email nprcetprincipal@nprcolleges.org</p>	
---	--	---

EMPLOYERS FEEDBACK ANALYSIS REPORT

 <p>NPR Group of Institutions Reach the Stars</p>	<h2 style="text-align: center;">NPR College of Engineering & Technology</h2> <p style="text-align: center;">NPR Nagar, Natham, Dindigul - 624401, Tamil Nadu, India. Approved by AICTE, New Delhi & Affiliated to Anna University, Chennai. An ISO 9001:2015 Certified Institution. Phone No: 04544- 246 500, 246501, 246502. Website : www.nprcolleges.org, www.nprcet.org, Email nprcetprincipal@nprcolleges.org</p>	
---	--	---

Employer Feedback on Curriculum Info – Feedback Analysis Report

Academic Year: 2020-2021

Report Date: 22/01/2021

From: 18/12/2020

To: 21/01/2021

S.No	Question's	Excellent	Very Good	Good	Fair	Poor	Total Weightage	Percentage	3-Scale Weightage
1	How do you rate the syllabus relevant to the real life situations?	7	2	0	0	0	43	95.56%	2.87
2	How do you rate the learning values (skills, concepts, knowledge & analytical abilities) present in the syllabus?	6	3	0	0	0	42	93.33%	2.80
3	How do you rate the relevance for implementation in projects?	8	1	0	0	0	44	97.78%	2.93
4	How do you rate the gap filling ability of the available syllabus to bridge academics and Industry?	7	1	1	0	0	42	93.33%	2.80
5	How do you rate the design of the curriculum on developing the employability?	2	4	3	0	0	35	77.78%	2.33
6	How do you rate the design of curriculum on nurturing the entrepreneurship?	3	2	4	0	0	35	77.78%	2.33



 <p>NPR Group of Institutions Reach the Stars</p>	<p align="center">NPR College of Engineering & Technology NPR Nagar, Natham, Dindigul - 624401, Tamil Nadu, India. Approved by AICTE, New Delhi & Affiliated to Anna University, Chennai. An ISO 9001:2015 Certified Institution. Phone No: 04544- 246 500, 246501, 246502. Website : www.nprcolleges.org, www.nprcet.org, Email nprcetprincipal@nprcolleges.org</p>	
---	--	---

7	How do you rate the syllabus updation regarding advanced topics?	5	3	1	0	0	40	88.89%	2.67
8	How do you rate the available teaching tools to enhance the understanding of subjects?	3	5	1	0	0	38	84.44%	2.53
AVERAGE SCORE							209	81.96%	2.46




Dr. JSUNDARARAJAN,
 B.E, M.Tech., Ph.D.,
 Principal
 N.P.R. College of Engineering & Technology
 Natham, Dindigul (Dt) - 624 401.

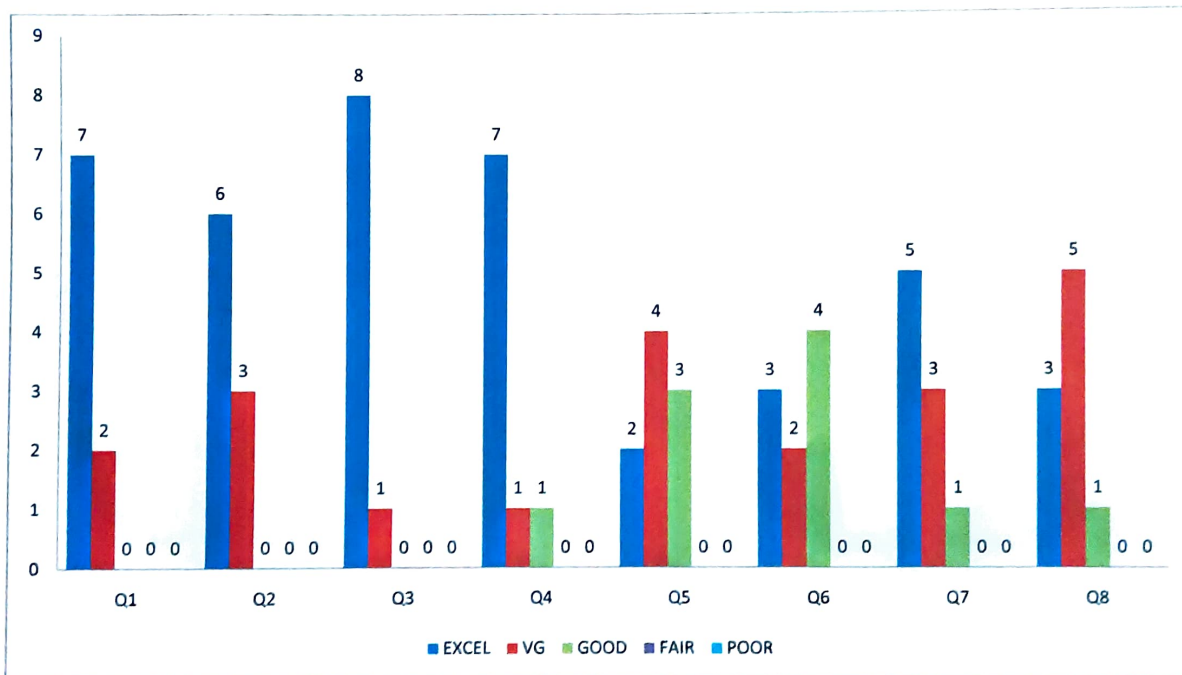


NPR College of Engineering & Technology

NPR Nagar, Natham, Dindigul - 624401, Tamil Nadu, India.
Approved by AICTE, New Delhi & Affiliated to Anna University, Chennai.
An ISO 9001:2015 Certified Institution.
Phone No: 04544- 246 500, 246501, 246502.



Website : www.nprcolleges.org, www.nprcet.org, Email nprcetprincipal@nprcolleges.org



Employer Feedback – From 18/12/2020 To 21/01/2021





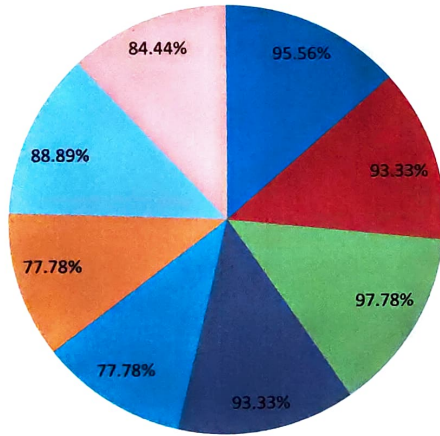
NPR College of Engineering & Technology

NPR Nagar, Natham, Dindigul - 624401, Tamil Nadu, India.
Approved by AICTE, New Delhi & Affiliated to Anna University, Chennai.
An ISO 9001:2015 Certified Institution.
Phone No: 04544- 246 500, 246501, 246502.

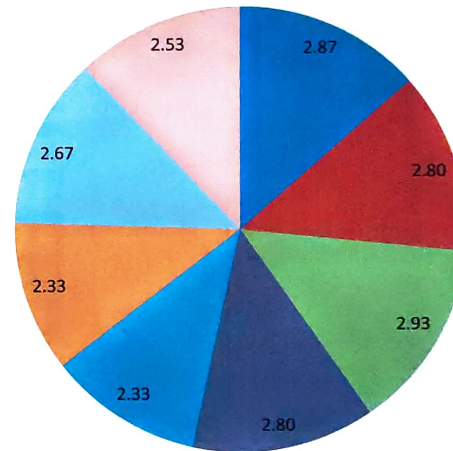


Website : www.nprcolleges.org www.nprcet.org Email nprcetprincipal@nprcolleges.org

Percentage



3-Scale Index



Employer Feedback – From 18/12/2020 To 21/01/2021





NPR College of Engineering & Technology

NPR Nagar, Natham, Dindigul - 624401, Tamil Nadu, India.
Approved by AICTE, New Delhi & Affiliated to Anna University, Chennai.

An ISO 9001:2015 Certified Institution.

Phone No: 04544- 246 500, 246501, 246502.

Website : www.nprcolleges.org, www.nprcet.org, Email nprcetprincipal@nprcolleges.org



ALUMNI FEEDBACK QUESTIONNAIRE

	<p align="center"> NPR College of Engineering & Technology NPR Nagar, Natham, Dindigul - 624401, Tamil Nadu, India. Approved by AICTE, New Delhi & Affiliated to Anna University, Chennai. An ISO 9001:2015 Certified Institution. Phone No: 04544- 246 500, 246501, 246502. Website : www.nprcolleges.org, www.nprcet.org, Email nprcetprincipal@nprcolleges.org </p>	
---	--	---

Alumni Feedback on Curriculum Questionnaire

S.No	Questions
1	How do you rate relevance of the courses in relation to the program?
2	How do you rate the sequence of the courses included into the programs?
3	How do you rate the competencies in relation to the course content?
4	How do rate the sequence of the topics in the units?
5	Rate the offering of the in relation to the specialization streams?
6	How do you rate the offering of the electives in relation to the Technological advancements?
7	How do you rate the courses which are skills related suiting to the Industry included into the programs?
8	How do you rate the domain used for designing the experiments in terms of the suitability of the Tools to the domain?
9	How do you rate the experiments in terms of their relevance to the real life application?
10	How do you rate the courses that you have learnt in relation to your current Job?




Dr. J.SUNDARARAJAN,
 B.E., M.Tech., Ph.D.,
 Principal
 N.P.R. College of Engineering & Technology,
 Natham, Dindigul (Dt) - 624 401.



NPR College of Engineering & Technology

NPR Nagar, Natham, Dindigul - 624401, Tamil Nadu, India.

Approved by AICTE, New Delhi & Affiliated to Anna University, Chennai.

An ISO 9001:2015 Certified Institution.

Phone No: 04544- 246 500, 246501, 246502.

Website : www.nprcolleges.org, www.nprcet.org, Email: nprcetprincipal@nprcolleges.org



ALUMNI FEEDBACK

UNFILLED FORMS

Alumni Feedback on Curriculum - NPR College of Engineering and Technology, Natham, Dindigul

Dear Alumni,

Greetings. Hope you are safe and doing well. We are expecting your visit in the department. Please give your valuable feedback on curriculum and syllabus to improve quality of the programme.

* Required

1. Name of the Alumni *

2. Batch *

Mark only one oval.

2008-2012

2009-2013

2010-2014

2011-2015

2012-2016

2013-2017

2014-2018

2015-2019

2016-2020

2017-2021

3. Enter your Mail ID *



4. Branch *

Mark only one oval.

- CSE
- ECE
- EEE
- CIVIL
- Mechanical

5. How do you rate relevance of the courses in relation to the program? *

Mark only one oval.

- Excellent
- Very good
- Good
- Fair
- Poor

6. How do you rate the sequence of the courses included into the programs? *

Mark only one oval.

- Excellent
- Very good
- Good
- Fair
- Poor



7. How do you rate the competencies in relation to the course content? *

Mark only one oval.

Excellent

Very good

Good

Fair

Poor

8. How do rate the sequence of the topics in the units? *

Mark only one oval.

Excellent

Very good

Good

Fair

Poor

9. Rate the offering of the in relation to the specialization streams? *

Mark only one oval.

Excellent

Very good

Good

Fair

Poor



10. How do you rate the offering of the electives in relation to the Technological *
advancements?

Mark only one oval.

Excellent

Very good

Good

Fair

Poor

11. How do you rate the courses which are skills related suiting to the Industry *
included into the programs?

Mark only one oval.

Excellent

Very good

Good

Fair

Poor

12. How do you rate the domain used for designing the experiments in terms of *
the suitability of the Tools to the domain?

Mark only one oval.

Excellent

Very good

Good

Fair

Poor



13. How do you rate the experiments in terms of their relevance to the real life application? *

Mark only one oval.

Excellent

Very good

Good

Fair

Poor

14. How do you rate the courses that you have learnt in relation to your current Job? *

Mark only one oval.

Excellent

Very good

Good

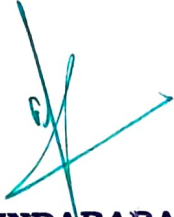
Fair

Poor

This content is neither created nor endorsed by Google.

Google Forms




Dr. J.SUNDARARAJAN,
B.E., M.Tech., Ph.D.,
Principal
N.P.R. College of Engineering & Technology,
Natham, Dindigul (Dt) - 624 401.

	<p>NPR College of Engineering & Technology NPR Nagar, Natham, Dindigul - 624401, Tamil Nadu, India. Approved by AICTE, New Delhi & Affiliated to Anna University, Chennai. An ISO 9001:2015 Certified Institution. Phone No: 04544- 246 500, 246501, 246502. Website : www.nprcolleges.org, www.nprcet.org, Email: nprcetprincipal@nprcolleges.org</p>	
---	---	---

ALUMNI FEEDBACK FILLED FORMS

Alumni Feedback on Curriculum - NPR College of Engineering and Technology, Natham, Dindigul

Dear Alumni,

Greetings. Hope you are safe and doing well. We are expecting your visit in the department. Please give your valuable feedback on curriculum and syllabus to improve quality of the programme.

Name of the Alumni *

AJITH KUMAR P

Batch *

- 2008-2012
- 2009-2013
- 2010-2014
- 2011-2015
- 2012-2016
- 2013-2017
- 2014-2018
- 2015-2019
- 2016-2020
- 2017-2021

Enter your Mail ID *

ajithkumarpjk@gmail.com



Branch *

- CSE
- ECE
- EEE
- CIVIL
- Mechanical

How do you rate relevance of the courses in relation to the program? *

- Excellent
- Very good
- Good
- Fair
- Poor

How do you rate the sequence of the courses included into the programs? *

- Excellent
- Very good
- Good
- Fair
- Poor



How do you rate the competencies in relation to the course content? *

- Excellent
- Very good
- Good
- Fair
- Poor

How do rate the sequence of the topics in the units? *

- Excellent
- Very good
- Good
- Fair
- Poor

Rate the offering of the in relation to the specialization streams? *

- Excellent
- Very good
- Good
- Fair
- Poor



How do you rate the offering of the electives in relation to the Technological advancements? *

- Excellent
- Very good
- Good
- Fair
- Poor

How do you rate the courses which are skills related suiting to the Industry included into the programs? *

- Excellent
- Very good
- Good
- Fair
- Poor



How do you rate the domain used for designing the experiments in terms of the suitability *
of the Tools to the domain?

- Excellent
- Very good
- Good
- Fair
- Poor

How do you rate the experiments in terms of their relevance to the real life application? *

- Excellent
- Very good
- Good
- Fair
- Poor

How do you rate the courses that you have learnt in relation to your current Job? *

- Excellent
- Very good
- Good
- Fair
- Poor




Dr. J.SUNDARARAJAN,

B.E., M.Tech., Ph.D.,

Principal

N.P.R. College of Engineering & Techno-

Natham, Dindigul (Dt) - 624 461

	<p>NPR College of Engineering & Technology NPR Nagar, Natham, Dindigul - 624401, Tamil Nadu, India. Approved by AICTE, New Delhi & Affiliated to Anna University, Chennai. An ISO 9001:2015 Certified Institution. Phone No: 04544- 246 500, 246501, 246502. Website : www.nprcolleges.org, www.nprcet.org, Email nprcetprincipal@nprcolleges.org</p>	
---	--	---

ALUMNI FEEDBACK ANALYSIS REPORT



NPR College of Engineering & Technology

NPR Nagar, Natham, Dindigul - 624401, Tamil Nadu, India.
Approved by AICTE, New Delhi & Affiliated to Anna University, Chennai.

An ISO 9001:2015 Certified Institution.

Phone No: 04544- 246 500, 246501, 246502.

Website : www.nprcolleges.org, www.nprcet.org, Email nprcetprincipal@nprcolleges.org



Alumni Feedback on Curriculum Info – Feedback Analysis Report

Academic Year: 2020-2021

Report Date: 20/01/2021

From:18/12/2020

To:18/01/2021

S.No	Question's	Excellent	Very Good	Good	Fair	Poor	Total Weightage	Percentage	3-Scale Weightage
1	How do you rate relevance of the courses in relation to the program?	124	58	41	7	0	989	86.00%	2.58
2	How do you rate the sequence of the courses included into the programs?	120	72	31	6	1	994	86.43%	2.59
3	How do you rate the competencies in relation to the course content?	82	102	40	6	0	950	82.61%	2.48
4	How do rate the sequence of the topics in the units?	72	103	49	6	0	931	80.96%	2.43
5	Rate the offering of the in relation to the specialization streams?	80	79	64	7	0	922	80.17%	2.41
6	How do you rate the offering of the electives in relation to the Technological advancements?	90	89	31	20	0	939	81.65%	2.45
7	How do you rate the courses which are skills related suiting to the Industry included into the programs?	72	78	58	21	1	889	77.30%	2.32
8	How do you rate the domain used for designing the experiments in terms of the	67	82	59	20	2	882	76.70%	2.30





NPR College of Engineering & Technology

NPR Nagar, Natham, Dindigul - 624401, Tamil Nadu, India.
Approved by AICTE, New Delhi & Affiliated to Anna University, Chennai.

An ISO 9001:2015 Certified Institution.

Phone No: 04544- 246 500, 246501, 246502.

Website : www.nprcolleges.org, www.nprcet.org, Email nprcetprincipal@nprcolleges.org



	suitability of the Tools to the domain?								
9	How do you rate the experiments in terms of their relevance to the real life application?	68	80	60	20	2	882	76.70%	2.30
10	How do you rate the courses that you have learnt in relation to your current Job?	105	80	39	6	0	974	84.70%	2.54
AVERAGE SCORE							935.20	81.32%	2.44




Dr. J.SUNDARARAJAN,
B.E., M.Tech., Ph.D.,
Principal
N.P.R. College of Engineering & Technology
Natham, Dindigul (Dt) - 624 401.



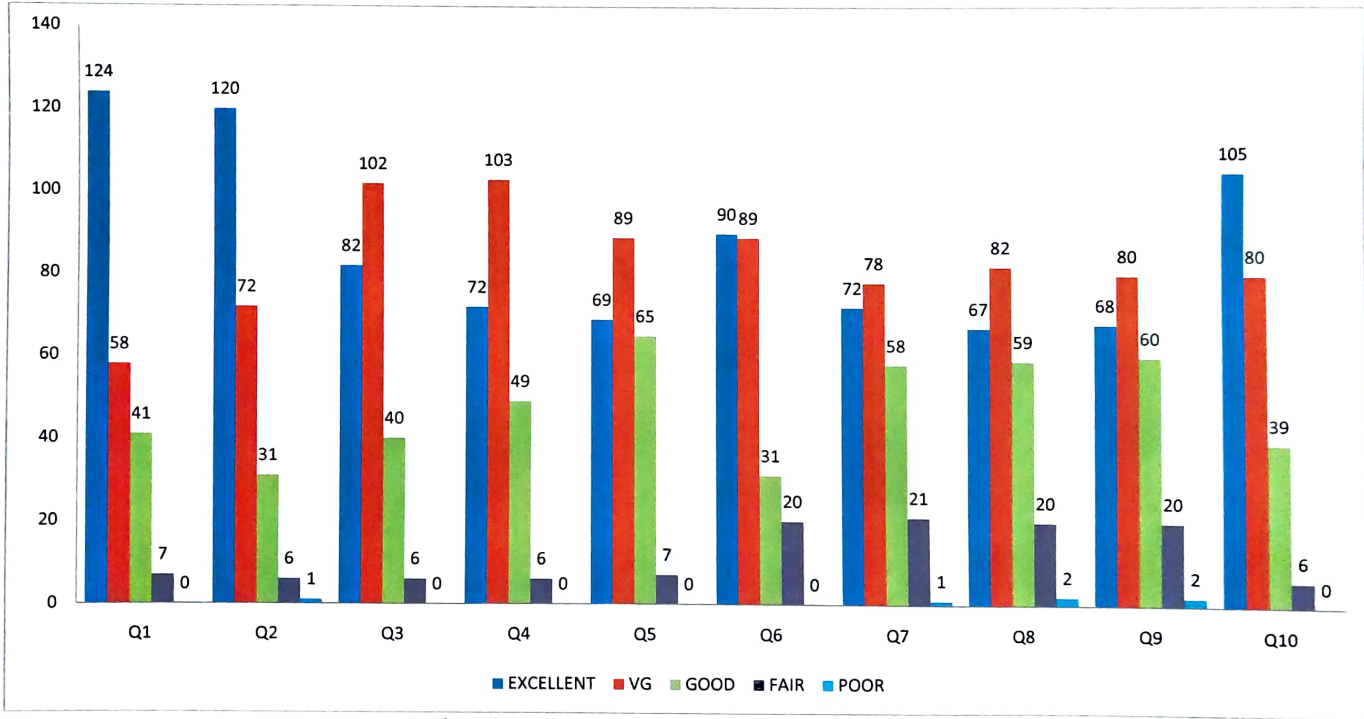
NPR College of Engineering & Technology

NPR Nagar, Natham, Dindigul - 624401, Tamil Nadu, India.
Approved by AICTE, New Delhi & Affiliated to Anna University, Chennai.

An ISO 9001:2015 Certified Institution.

Phone No: 04544- 246 500, 246501, 246502.

Website : www.nprcolleges.org, www.nprcet.org, Email: nprcetprincipal@nprcolleges.org



Alumni Feedback – From 18/12/2020 To 18/01/2021





NPR College of Engineering & Technology

NPR Nagar, Natham, Dindigul - 624401, Tamil Nadu, India.

Approved by AICTE, New Delhi & Affiliated to Anna University, Chennai

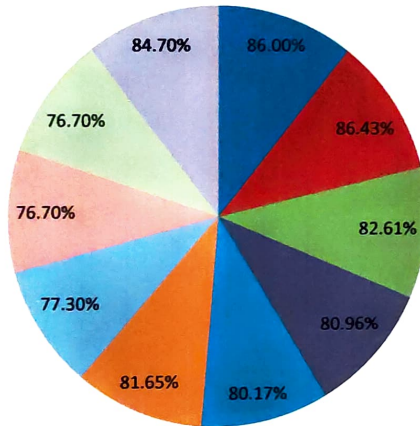
An ISO 9001:2015 Certified Institution.

Phone No: 04544- 246 500, 246501, 246502.

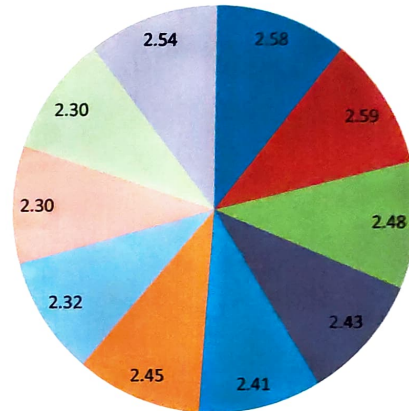
Website : www.nprcolleges.org, www.nprcet.org, Email nprcetprincipal@nprcolleges.org



Percentage



3-Scale Index



Alumni Feedback – From 18/12/2020 To 18/01/2021





NPR College of Engineering & Technology

NPR Nagar, Natham, Dindigul - 624401, Tamil Nadu, India.
Approved by AICTE, New Delhi & Affiliated to Anna University, Chennai.

An ISO 9001:2015 Certified Institution.

Phone No: 04544- 246 500, 246501, 246502.

Website : www.nprcolleges.org, www.nprcet.org, Email: nprcetprincipal@nprcolleges.org



ACTION TAKEN REPORT



NPR College of Engineering & Technology

NPR Nagar, Natham, Dindigul - 624401, Tamil Nadu, India.
Approved by AICTE, New Delhi & Affiliated to Anna University, Chennai.

An ISO 9001:2015 Certified Institution.

Phone No: 04544- 246 500, 246501, 246502.

Website : www.nprcolleges.org, www.nprcet.org, Email nprcetprincipal@nprcolleges.org



Action Taken Report for the Analysis of Feedback collected from Students, Faculty, Alumni and Employer

Feedback Collected From	Number of Responses	Threshold	Questionnaires with less threshold	Action Taken
Student	582	2.24/3	How do you rate the domain used for designing the experiments for lab components?	More mini projects are planned to give students from upcoming semester.
		2.24/3	How do you rate the experiments in relation to there in life Applications?	Industrial visit, Industry internship is executed to have better understanding in relevant subjects.
		2.23/3	Rate the courses in terms of extra learning or self-learning considering the design of the courses?	Students are motivated to attend Add-On courses, Symposium and on design skills.
Faculty	77	2.36/3	The system followed by the university for the design and development of curriculum is effective?	Faculties are instructed to refer Anna University prescribed books, To attend AICTE FDP, NPTEL courses,etc.
		2.37/3	Provision to update curriculum time to time.	It is planned to analyses the curriculum gap and to include the content beyond syllabus as per the industrial need.
		2.39/3	How do rate the electives offered in your program for the technological advancements?	
		2.38/3	The curriculum has a good balance between theory and practical.	It is planned to conduct beyond experiments from the theory papers.





NPR College of Engineering & Technology

NPR Nagar, Natham, Dindigul - 624401, Tamil Nadu, India.
Approved by AICTE, New Delhi & Affiliated to Anna University, Chennai.
An ISO 9001:2015 Certified Institution.
Phone No: 04544- 246 500, 246501, 246502.



Website : www.nprcolleges.org, www.nprcet.org, Email nprcetprincipal@nprcolleges.org

Alumni	230	2.32/3	How do you rate the courses which are skills related suiting to the industry included in the programs?	It is planned to attend internship, main project and in plant training in industries.
		2.30/3	How do you rate the domain used for designing the experiments in terms of the suitability of the tools to the domain?	Internal Assessment tools like Quiz, GD, etc were conducted.
		2.30/3	How do you rate the experiments in term of their relevance to the real life application?	Industrial visit, Industry internship is executed to have better understand in subject.
Employer	9	2.33/3	How do you the design of the curriculum on developing the employability?	We conduct bridge course and enhance student's communication and aptitude skills by placement cell.
		2.33/3	The design of curriculum on nurturing the entrepreneurship?	EDC cell has conducted more programs to make the students to the future demand through the Entrepreneurship.



Dr. J.SUNDARARAJAN,
B.E., M.Tech., Ph.D.,
Principal
N.P.R. College of Engineering & Technology
Natham, Dindigul (Dt) - 624 401.